

ELEVACION GRUA

GROVE GMK 4075

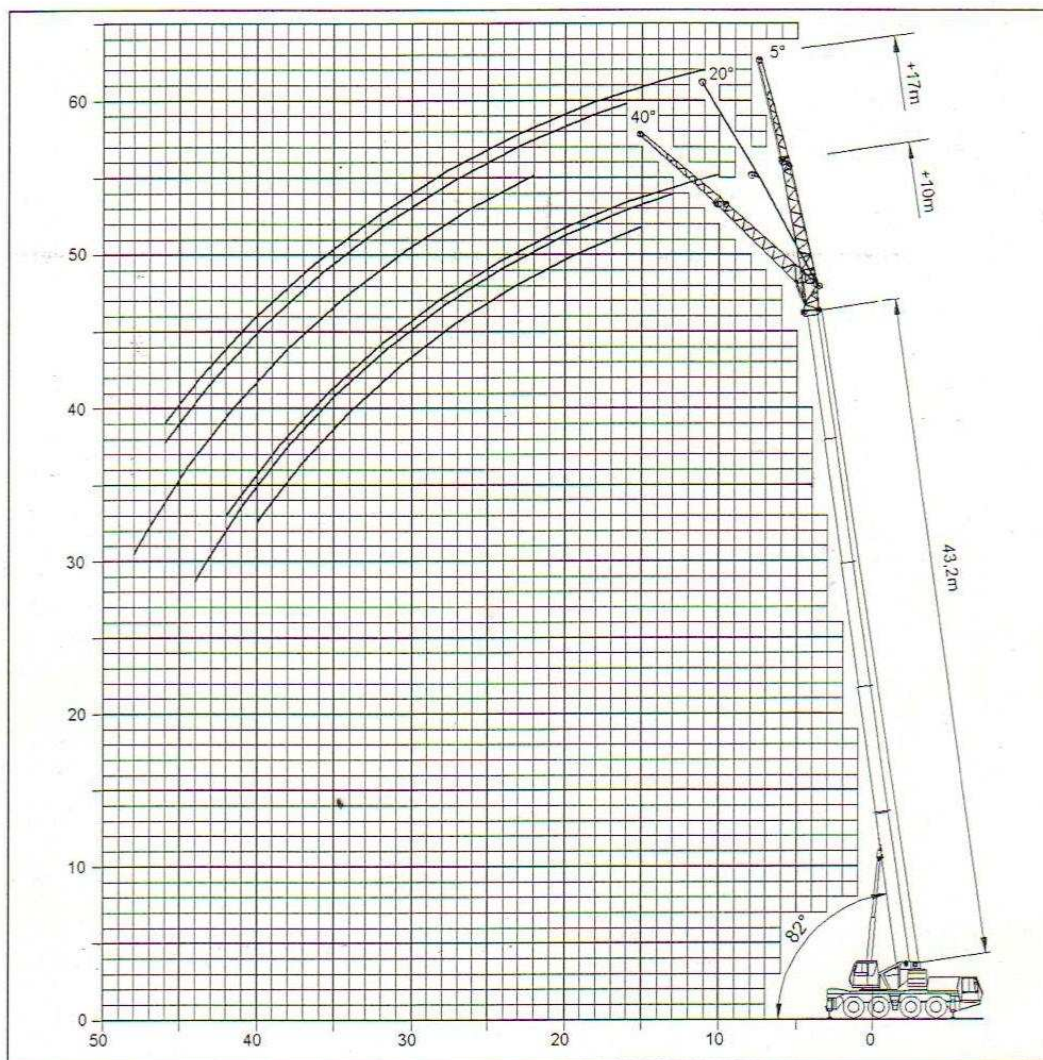


TABLA DE CARGA

GROVE GMK 4075

16,1	Kran mit 16.1 t Gegengewicht (Stützbasis 8,100 x 7,000 m)								
	Hauptausleger - Festlängen in m								
	11.20	15.20	15.20	15.20	15.20	19.20	19.20	19.20	19.20
Tele I	0.00	0.50	0.00	0.00	0.00	0.50	0.00	0.00	0.00
Tele II	0.00	0.00	0.50	0.00	0.00	0.50	0.50	0.00	0.00
Tele III	0.00	0.00	0.00	0.50	0.00	0.00	0.50	0.50	0.00
Tele IV	0.00	0.00	0.00	0.00	0.50	0.00	0.00	0.50	1.00
Drehbereich	360°								
Ausladung in m	Tragfähigkeiten in t								
3.0	68.0	55.5	55.0	56.5	40.5	53.0	53.5	42.0	27.0
4.0	52.0	48.5	49.0	49.0	36.0	45.5	46.0	39.0	24.5
5.0	45.0	43.0	43.5	43.5	32.0	40.5	41.0	35.0	22.0
6.0	39.0	37.5	38.0	38.5	29.0	36.5	37.0	31.5	19.5
7.0	33.5	33.0	33.5	34.0	27.0	32.5	33.5	28.5	17.8
8.0	27.5	27.0	28.0	28.5	24.5	27.0	28.0	26.0	16.2
9.0		22.0	22.5	23.5	23.0	22.5	23.5	24.0	14.9
10.0		18.3	18.9	19.5	20.0	18.7	19.6	20.5	13.7
11.0		15.5	16.1	16.6	17.1	15.9	16.8	17.6	12.8
12.0		13.3	13.9	14.4	14.8	13.7	14.5	15.3	12.0
13.0						11.9	12.7	13.4	11.3
14.0						10.4	11.2	11.9	10.6
15.0						9.2	10.0	10.7	10.0
16.0						8.1	8.9	9.6	9.4
LMB Code	810								
Zulässige Windgeschwindigkeit	12 m/s								

Traglasten > 58.0 t können nur mit einer Zusatzausrüstung gehoben werden.

16,1	Kran mit 16.1 t Gegengewicht (Stützbasis 8,100 x 7,000 m)						
	Hauptausleger - Festlängen in m						
	35.20	35.20	35.20	35.20	39.20	39.20	43.20
Tele I	1.00	0.50	0.50	0.00	0.50	1.00	1.00
Tele II	1.00	1.00	0.50	1.00	1.00	1.00	1.00
Tele III	0.50	1.00	1.00	1.00	1.00	1.00	1.00
Tele IV	0.50	0.50	1.00	1.00	1.00	0.50	1.00
Drehbereich	360°						
Ausladung in m	Tragfähigkeiten in t						
5.0	17.5	17.0	17.0	16.0			
6.0	17.5	17.0	17.0	16.0	13.5	14.0	
7.0	17.5	17.0	17.0	15.8	13.5	14.0	11.0
8.0	17.5	16.7	16.3	14.7	13.5	14.0	11.0
9.0	16.5	15.6	15.3	13.7	13.5	14.0	11.0
10.0	15.4	14.6	14.4	12.8	12.9	13.7	11.0
11.0	14.4	13.8	13.6	12.0	12.2	12.9	11.0
12.0	13.4	12.9	12.9	11.2	11.6	12.2	11.0
13.0	12.3	12.3	12.2	10.5	11.0	11.6	10.6
14.0	11.1	11.6	11.6	9.9	10.3	11.0	10.1
15.0	10.1	10.6	11.0	9.2	9.7	10.0	9.5
16.0	9.0	9.5	9.9	8.8	9.3	9.2	9.1
18.0	7.3	7.8	8.1	7.9	8.1	7.5	7.8
20.0	6.0	6.5	6.8	6.9	6.8	6.2	6.5
22.0	4.9	5.4	5.7	5.8	5.7	5.1	5.4
24.0	4.1	4.5	4.9	5.0	4.9	4.3	4.6
26.0	3.4	3.8	4.2	4.2	4.1	3.6	3.8
28.0	2.8	3.2	3.6	3.7	3.5	3.0	3.3
30.0	2.3	2.7	3.1	3.1	3.0	2.5	2.7
32.0	1.8	2.3	2.6	2.7	2.6	2.0	2.3
34.0					2.2	1.7	1.9
36.0					1.9	1.3	1.6
38.0							1.3
40.0							1.0
LMB Code	810						
Zulässige Windgeschwindigkeit	10 m/s				8 m/s		

ARRIENDO SAN PABLO

KM 9.5 CAMINO LABRANZA TEMUCO

FONO: 0452337950